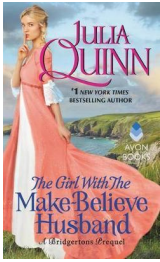


# Brenda

Created by **Patron538581**



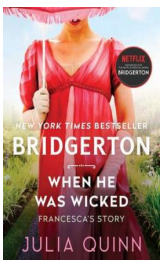
## The girl with the make-believe husband

*Julia Quinn.*



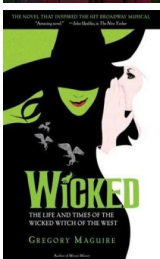
## It's in his kiss

*Julia Quinn.*



## When he was wicked

*Julia Quinn.*

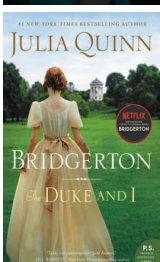


## WICKED: THE LIFE & TIMES OF THE WICKED WITCH OF TH.



## Because of Miss Bridgerton

*Julia Quinn.*



## Bridgerton

*Julia Quinn.*



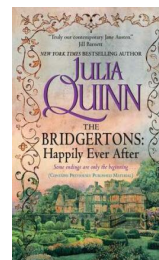
## First comes scandal

*Julia Quinn.*



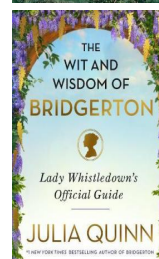
## On the way to the wedding

*Julia Quinn.*



## The Bridgertons

*Julia Quinn.*



## The wit and wisdom of Bridgerton

*Julia Quinn*



## The other Miss Bridgerton

*Julia Quinn.*